



SPECIFICATION



P/N: LCP-WWL



光圓科技股份有限公司

新竹市金山六街 55 號 1 樓 (新竹第二辦公室)

LED CIRCLE Technology Corporation

1F, No. 55, Jin-Shan 6th St., Hsin-Chu City 300, Taiwan, R.O.C. (Hsin-Chu 2nd Office)

TEL: +886-3-567-9283 Fax: +886-3-567-8764 Web : www.ledcircle.com; Email: philips@ledcircle.com

高品質的 LED 照明產品就在光圓科技===== LC provides high quality LED Lighting products



LED Circle Technology Corporation

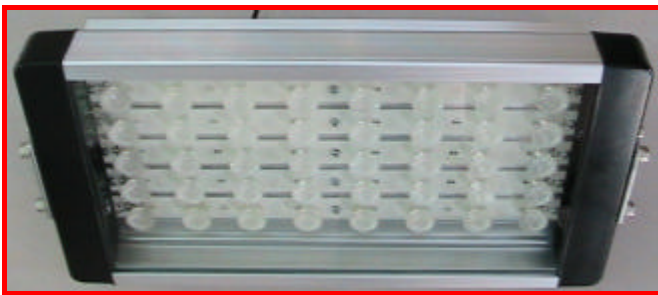
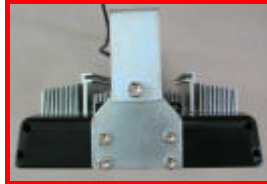
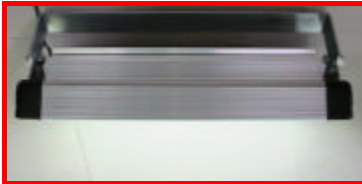
Web: www.ledcircle.com

E-mail: philips@ledcircle.com

Tel: +886-3-5679283

Fax: +886-3-5678764

Product photos



Typical Applications

- Wall wash lights.
- Ceiling lights
- Parking garages lighting
- Factory lighting
- Warehouses lighting
- Stockrooms lighting
- Clean room foundry lighting
- Architectural lighting
- Garden lighting
- Marker & Orientation lights
- Landscape lighting

Benefits

- Long Life (20,000~50,000 hours)
- Provides flexibility to designers
- Ease of installation
- Energy efficiency
- It is a hazard free product
- Allows use in indoor and outdoor applications

Selection Guide

| Part Number | Description |
|---------------|------------------------|
| LCP-WWL-XXXWW | 3000K ± 10% Warm white |
| LCP-WWL-XXXCW | 5000K ± 10% Cold White |
| LCP-WWL-XXXSW | 6300K ± 10% Sun White |

Note: 1. **XXX=45** (45W) or **65** (65W) or **120** (120W) or others.

2. View Angle Optional for **-120=** 120 degree.

-60= 60 degree.

-30= 30 degree.

3. LED Optional for **-B=** BL LEDs.

-C= Cree LEDs.

-SL= SL LEDs.

-S= Special Unique LEDs from Japan.

Electrical characteristics

| | |
|---------------------|----------------------------|
| Input Voltage Range | 81Vac~280Vac |
| Input Frequency | 47Hz~63Hz |
| Watts | Typical: 45 or 65W or 120W |
| Power Factor | 0.95~1.0 |
| Efficiency | 85%~90% |

Product information

| | |
|----------------------|---------------------------------|
| Life Cycle | 20,000~50,000 hours |
| Dimensions (W:D:H) | 360mm:202mm:125mm |
| Weight | 2.5~6Kg (Depended on the Model) |
| Housing | Aluminum |
| Lens | PC, Aluminum and Glass |
| Basic Luminous Shape | Rectangular |

Output

| | |
|-----------------------|---|
| Light Out (LEDs flux) | 4732lm(65W)~8736lm(120W) |
| CRI | 75~85 |
| Colour Temperature | 3000K ± 10% (Warm White) 5000K ± 10% (Cold White) 6300K ± 10% (Sun White) |

Environmental Ratings

| Parameter | Min | Max |
|-------------------------------|-----|-----|
| Operating Ambient Temperature | -40 | 75 |
| Storage Ambient Temperature | -40 | 80 |



LED Circle Technology Corporation

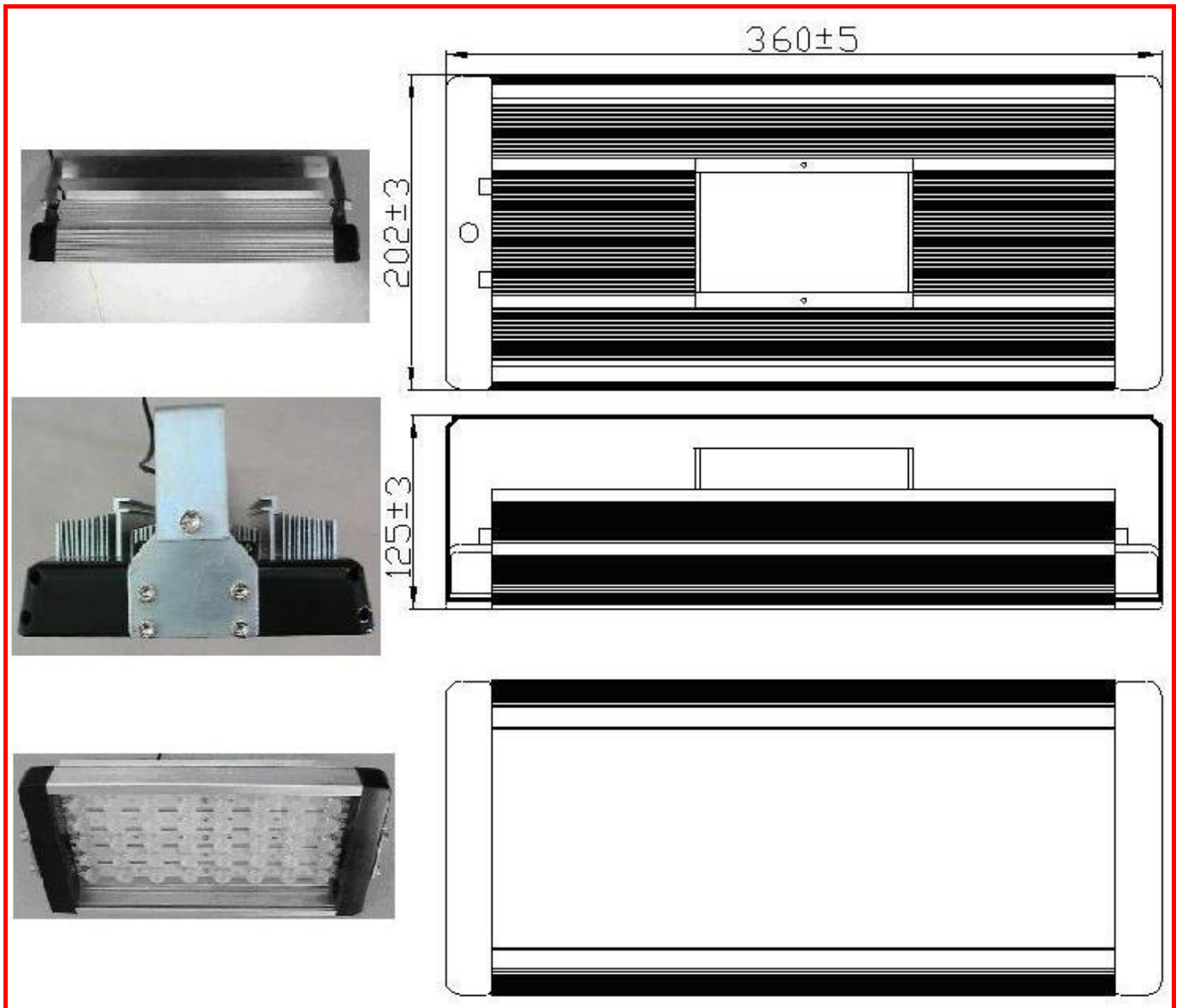
Web: www.ledcircle.com

E-mail: philips@ledcircle.com

Tel: +886-3-5679283

Fax: +886-3-5678764

Dimension : 360mm:202mm:125mm



PI



LED Circle Technology Corporation

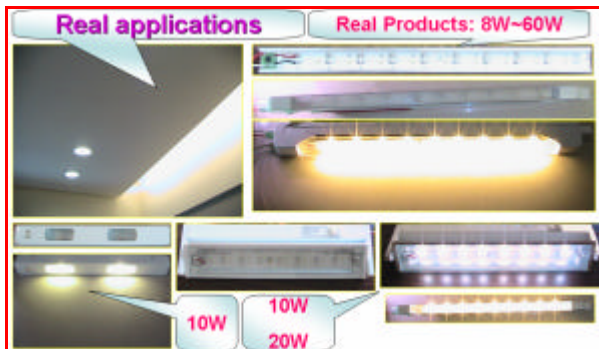
Web: www.ledcircle.com

E-mail: philips@ledcircle.com

Tel: +886-3-5679283

Fax: +886-3-5678764

Other Related Products: Light Bar, Circle Type Lights, MR16, E27, U10, Par30, Par38.



Important: Please contact our engineer to ensure installation and maintenance being properly executed to obtain maximum performance, efficiency and durability from the LED lighting product.

Disclaimer: While every care has been taken with the details on this specification sheet, we accept no responsibility for any inaccuracies and reserves the right to change these specifications without notice to always ensure that you are receiving a superior product.

光圓科技股份有限公司
 新竹市金山六街 55 號 1 樓 (新竹第二辦公室)
LED CIRCLE Technology Corporation
 1F, No. 55, Jin-Shan 6th St., Hsin-Chu City 300, Taiwan, R.O.C. (Hsin-Chu 2nd Office)
 TEL: +886-3-567-9283 Fax: +886-3-567-8764 Web : www.ledcircle.com; Email: philips@ledcircle.com
 高品質的 LED 照明產品就在光圓科技===== LC provides high quality LED Lighting products